



PRIMERGY F200
C/S with 2 PRIMERGY B210

TPC-C REV 5.0
 EXECUTIVE SUMMARY

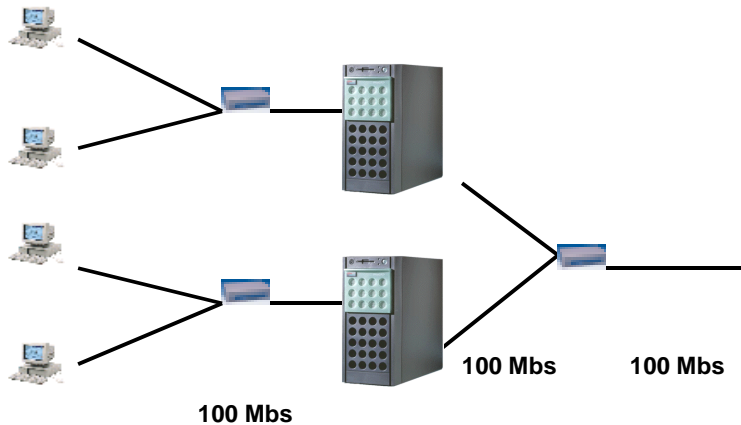
Report Date: October 25, 2001

Total System Cost	TPC-C Throughput	Price/Performance	Availability Date	
€196,805	22,007.12 tpmC	€8.94/tpmC	November 1, 2001	
Processors	Database Manager	Operating System	Other Software	Number of Users
Server 2 Intel Pentium® III 1266 MHz with 512 KB SLC Client 2 x 1 Intel Pentium® III 933 MHz with 256 KB SLC	Microsoft SQL Server 2000 Enterprise Edition SP1	Microsoft Windows 2000 Server SP2	Windows 2000 Server, IIS 5.0 and COM+	17,600

Terminals:
17600 users

Client:
2 x PRIMERGY B210
8800 users per client

Server:
PRIMERGY F200
3 SCSI Controller



Storage:
9 x PRIMERGY S30
104 disk

System Components	Qty/Srv.	1 PRIMERGY F200	Qty/Client	2 PRIMERGY B210
Processors	2	Intel Pentium® III 1266 MHz with 512 KB SLC	1	Intel Pentium® III 933 MHz with 256 KB SLC
Memory	4	GB	512	MB
Disk Controller	3	Mylex eXtremeRAID 2000	1	SCSI Controller
Disk Drives	1	9 GB	1	9 GB
	104	18 GB		
Total GB of Storage	1	1,638 GB	1	9 GB
Tape Drive	1	20 GB DAT		



PRIMERGY F200

TPC-C REV 5.0
EXECUTIVE SUMMARY

C/S with 2 PRIMERGY B210

Report Date: October 25, 2001

Description	Part Number	Third Party	Unit Price	Qty.	Extended Price	3yr Maint. Price
		Brand Pricing				
PRIMERGY F200 GE RS PIII 1,26GHz 512kB	S26361- K643- V302	1	2,320 Euro	1	2,320 Euro	
Pentium III Prozessor 1,26GHz 512kB	S26361- F2599- E126	1	980 Euro	1	980 Euro	
Memory 2GB SDRAM PC133 ECC	S26361- F2306- E525	1	2,840 Euro	2	5,680 Euro	
Tape DAT DDS4 20GB	S26361- F2233- E3	1	1,120 Euro	1	1,120 Euro	
Disk 9GB, 10k, U160, hot plug, 1"	SNP: SY- F2336E109- P	1	360 Euro	1	360 Euro	
Mylex eXtremeRAID 2000 4x U160 SCSI, BBU	S26361- F2190- E128	1	2,640 Euro	3	7,920 Euro	
CD- ROM, ATAPI	SNP: SY- F2240E1- A	1	68 Euro	1	68 Euro	
Keyboard KBPC S2 D	S26381- K297- E120	1	24 Euro	1	24 Euro	
Monitor 151E	S26361- K819- V150	1	184 Euro	1	184 Euro	
PRIMERGY S30 GE RH 2-Channel U160 SCSI	SNP: SY- K638V210- P	1	2,503 Euro	1	2,503 Euro	
PRIMERGY S30 Rack Kit	SNP: SY- F2261E8- P	1	120 Euro	1	120 Euro	
SCSI Cable UHD68(S)	SNP: SY- F2365L20- P	1	104 Euro	2	208 Euro	
3 Year Maintenance Server, 7x24, 4hr Resp.	FSP: G3S0400AAASFE	1				1,585 Euro
Server Hardware Subtotal		1			21,487 Euro	
DataCenter Rack 38 HU	SNP: SY- K614V101- P	1	1,560 Euro	1	1,560 Euro	
APC-USV 3000VA Rack	SNP: PS- E421E1- P	1	1,740 Euro	1	1,740 Euro	
18GB, 15k, U160, Hot plug, 1"	S26361-F2336-E518	1	751 Euro	104	78,104 Euro	
18GB, 15k, U160, Hot plug, 1", 10%sprare	S26361-F2336-E518	1	751 Euro	11	8,261 Euro	
PRIMERGY S30 GE RH 1-Ch incl. Spare	SNP:SY-K638V230-P	1	2,503 Euro	10	25,030 Euro	
PRIMERGY S30 Rack Kit incl. spare	SNP: SY- F2261E8- P	1	120 Euro	10	1,200 Euro	
SCSI Cable UHD68(S) incl. spare	SNP: SY- F2365L20- P	1	104 Euro	10	1,040 Euro	
3 Year Maintenance Rack, 7x24, 4hr Resp.	FSP: GX3S0400AAASR	1				1,585 Euro
Storage Subtotal					116,935 Euro	
Maint. Server + Storage						3,170 Euro
PRIMERGY B210 GE FS 933	S26361-K649-V131	1	1,380 Euro	2	2,760 Euro	
Terminator second CPU	SNP: SY- F2369E999- A	1	24 Euro	2	48 Euro	
Memory 128MB SDRAM PC133 ECC	SNP: SY- F2306E512- A	1	120 Euro	8	960 Euro	
Disk 9GB, U160, hot plug, 1"	SNP: SY- F2266E9- A	1	340 Euro	2	680 Euro	
CD- ROM, ATAPI	SNP: SY- F2240E1- A	1	68 Euro	2	136 Euro	
Fast Ether-Express-Pro/100+ Server (PCI)	SNP: SY- F2071E1- A	1	100 Euro	2	200 Euro	
Monitor 151E	S26361- K819- V150	1	184 Euro	2	368 Euro	
Tastatur KBPC S2 D	S26381- K297- E120	1	24 Euro	2	48 Euro	
3 Year Maintenance, 7x24, 4hr Resp.	FSP: G3S0400AAASFS	1	765 Euro	2		1,530 Euro
Client Hardware Subtotal		1			5,200 Euro	1,530 Euro
Microsoft Windows 2000 Server, incl.5 CALs	S26361- F2565- E701	1	955 Euro	1	955 Euro	
MS SQL-Server 2000 Ent.Edit. Per Proc Lic. (open program level B)	810-00845	1	19,665 Euro	2	39,330 Euro	
Server Software Subtotal					40,285 Euro	
Microsoft Windows 2000 Server, incl.5 CALs	S26361- F2565- E701	1	955 Euro	2	1,910 Euro	
Microsoft Visual C++ Professional 6.01	MSO: 048- 00328	1	859 Euro	1	859 Euro	
Client Software Subtotal					2,769 Euro	
Microsoft Software Support (all above)	SNP:10901600012	1				10,353 Euro
5x10/100Mbit Switch (+10% spare)	Neteasy	2	92 Euro	3	276 Euro	
User Connectivity Subtotal					276 Euro	
Total					181,752 Euro	15,053 Euro

1=Fujitsu-Siemens, 2=Avitos

Prices used in TPC bechmarks reflect the actual prices a customer would pay for a one-time purchase of the stated components. Individually negotiated discounts are not permitted. Special prices based on assumptions about past or future purchases are not permitted. All discounts reflect standard pricing policies for the listed components. For complete details, see the pricing section of the TPC benchmark pricing specifications. If you find that the stated prices are not available according to these terms, please inform the TPC at pricing@tpc.org. Thank you.

Five-Year Cost of Ownership: €196,805
tpmC Rating: 22,007.12
€/ tpmC: 8.94

Note: The benchmark results and test methodology were audited by Francois Raab of InfoSizing

Numerical Quantities Summary

MQTh, computed Maximum Qualified Throughput		22,007.12 tpmC	
Response Times (in seconds)	90th percentile	Average	Maximum
- New-Order	0.67	0.41	9.27
- Payment	0.58	0.33	9.21
- Order-Status	0.61	0.36	8.25
- Delivery (interactive portion)	0.12	0.11	6.49
- Delivery (deferred portion)	0.49	0.30	5.83
- Stock-Level	1.97	1.44	10.14
- Menu	0.12	0.11	8.10
Transaction Mix, in percent of total transactions			
- New-Order			44.89 %
- Payment			43.03 %
- Order-Status			4.01 %
- Delivery			4.04 %
- Stock-Level			4.03 %
Emulation Delay (in seconds)		Response Time	Menu
- New-Order		0.1	0.1
- Payment		0.1	0.1
- Order-Status		0.1	0.1
- Delivery (interactive)		0.1	0.1
- Stock-Level		0.1	0.1
Keying/Think Times (in seconds)	Minimum	Average	Maximum
- New-Order	18.00/0.000	18.01/12.05	18.04/120.50
- Payment	3.00/0.000	3.01/12.04	3.04/120.50
- Order-Status	2.00/0.000	2.01/10.04	2.04/100.50
- Delivery (interactive)	2.00/0.000	2.01/ 5.05	2.04/ 50.50
- Stock-Level	2.00/0.000	2.01/ 5.05	2.03/ 50.50
Test Duration and Checkpointing			
- Ramp-up time		30 minutes	
- Measurement interval		120 minutes	
- Number of checkpoints		4	
- Checkpoint interval		30 minutes	
- Transactions during measurement interval (all types)		6,120,713	